



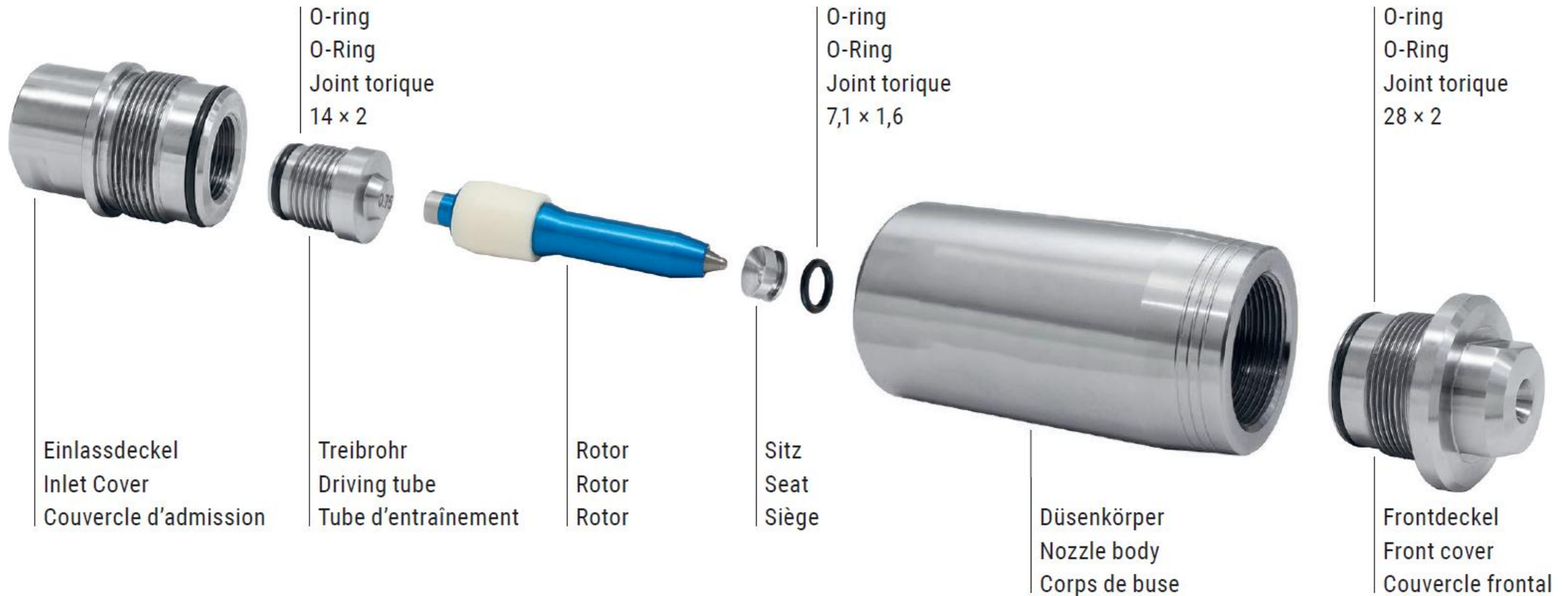
# Monrojet® (MJ) - Repair Information

January 26 | LGO | V1.4

# Monrojet® (MJ)



## Designation of the parts



## Assignment Rotor - Driveshaft

Rotor	Drive Tube		
	Part No.	No. of Holes	Ø Hole

0.65	550.99017	2x	0.65
0.70	550.99017	2x	0.70
0.75	550.99017	2x	0.75
0.80	550.99017	2x	0.80
0.85	550.99017	2x	0.80

Rotor	Drive Tube		
	Part No.	No. of Holes	Ø Hole

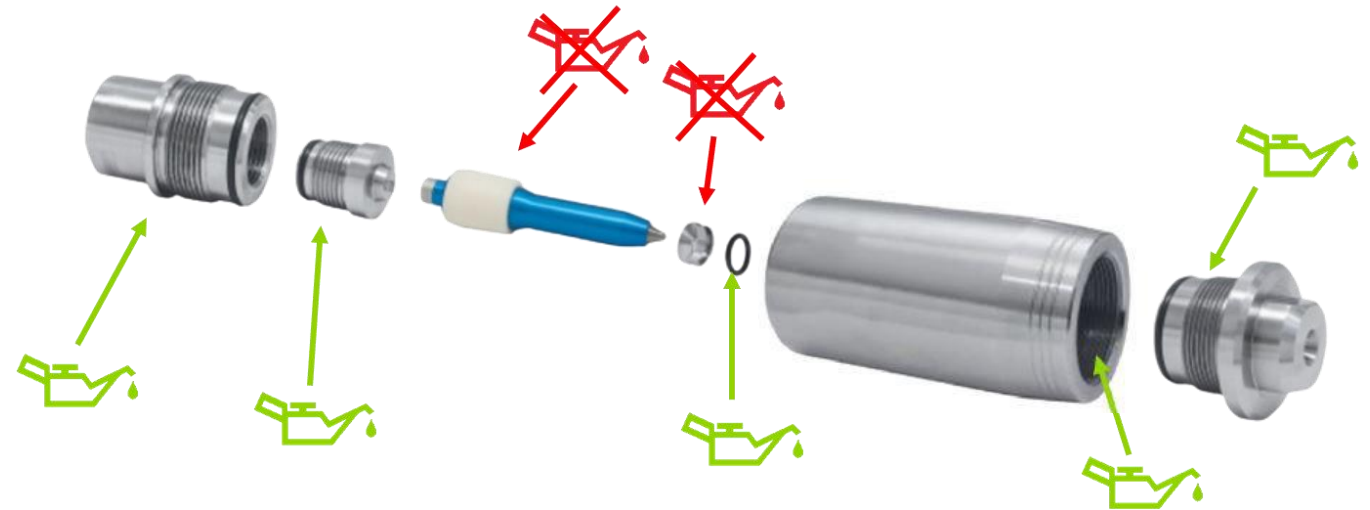
0.90	550.99018	2x	1.00
0.95	550.99018	2x	1.00
1.00	550.99018	2x	1.20
1.05	550.99018	2x	1.20
1.10	550.99018	2x	1.40
1.15	550.99018	2x	1.40
1.20	550.99018	2x	1.80
1.25	550.99018	2x	1.80
1.30	550.99018	2x	2.40
1.35	550.99018	2x	2.40
1.40	550.99018	2x	2.40
1.45	550.99018	2x	2.60
1.50	550.99018	2x	2.60
1.55	550.99018	2x	2.80
1.60	550.99018	2x	2.80
1.65	550.99018	2x	3.00
1.70	550.99018	2x	3.00
1.75	550.99018	2x	3.00
1.80	550.99018	2x	3.20
1.85	550.99018	4x	3.20

Rotor	Drive Tube		
	Part No.	No. of Holes	Ø Hole

1.90	550.99019	4x	3.00
1.95	550.99019	4x	3.00
2.00	550.99019	4x	3.00
2.05	550.99019	4x	3.00
2.10	550.99019	4x	3.00
2.15	550.99019	4x	3.20
2.20	550.99019	4x	3.20
2.25	550.99019	4x	3.20
2.30	550.99019	4x	3.20
2.35	550.99019	4x	3.20
2.40	550.99019	4x	3.20
2.45	550.99019	4x	3.20
2.50	550.99019	4x	3.20
2.55	550.99019	4x	3.50
2.60	550.99019	4x	3.50
2.65	550.99019	4x	3.50
2.70	550.99019	4x	3.50
2.75	550.99019	4x	3.50
2.80	550.99019	4x	3.50

# Monrojet® (MJ)

## The assembly



- Lubricate all threads with high-pressure grease (Art. No. 66.55000) before assembly. This grease is included in the repair kit.
- Nozzle body and rotor must remain free of grease!
- Tighten all components hand-tight only.

# Monrojet® (MJ) - Typical Damage Patterns



## Normal wear and tear on the rotor



- It is recommended to renew the rotor before the plastic is completely worn.
- If the rotor is worn too much, the nozzle housing may be damaged!



### Maintenance and Care

- > 1,000 bar daily check of the individual parts
- < 1,000 bar weekly check of the individual parts

# Monrojet® (MJ) - Typical Damage Patterns

## Damage to the nozzle housing due to a worn rotor



Worn rotor



New rotor



Damaged nozzle housing

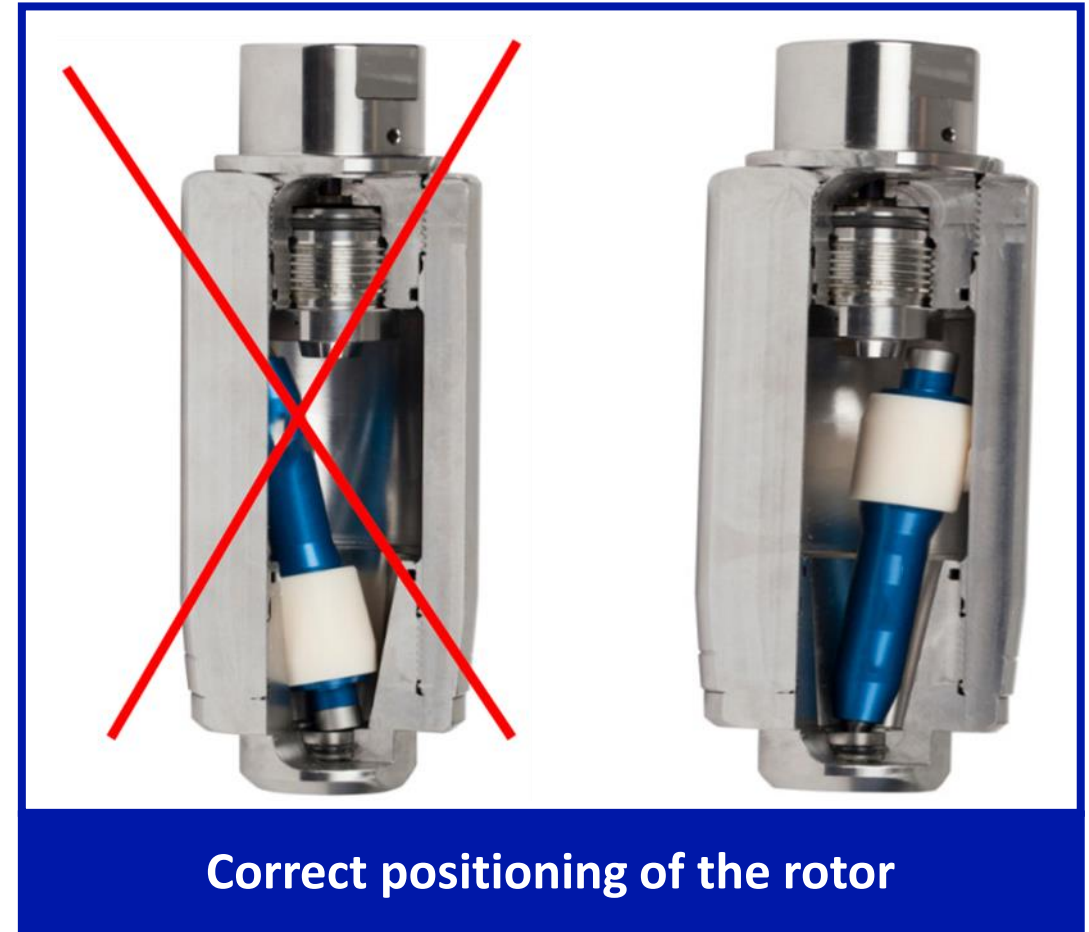
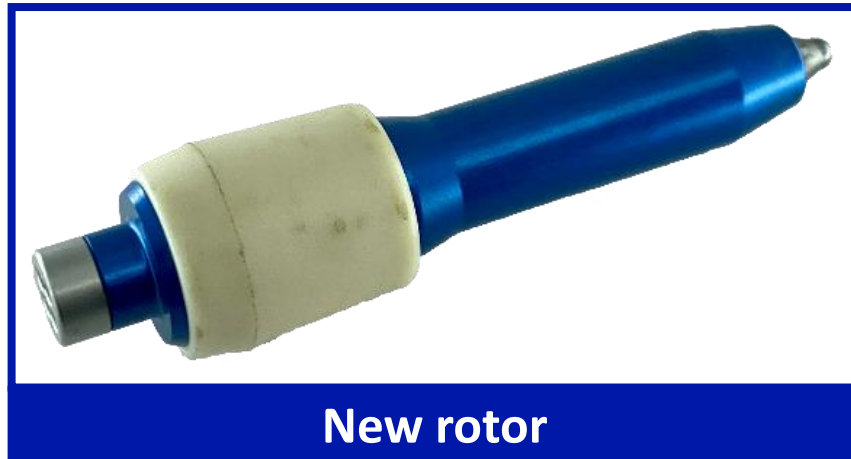
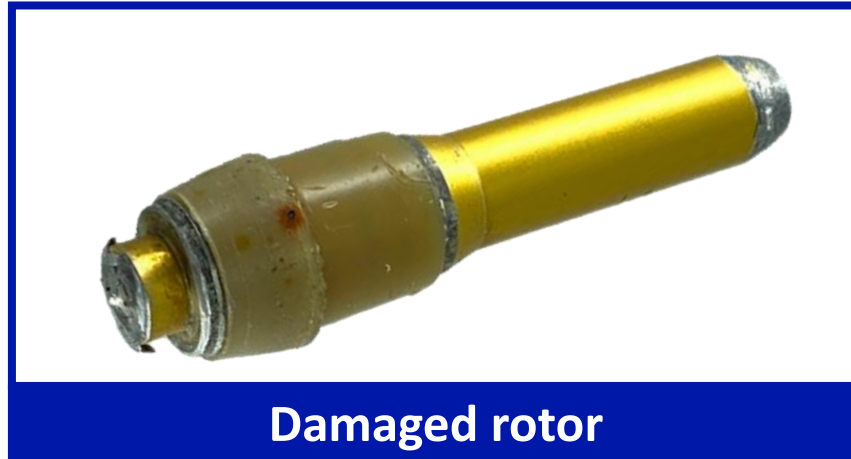


A worn nozzle housing must be replaced because it increases rotor wear.

# Monrojet® (MJ) - Typical Damage Patterns



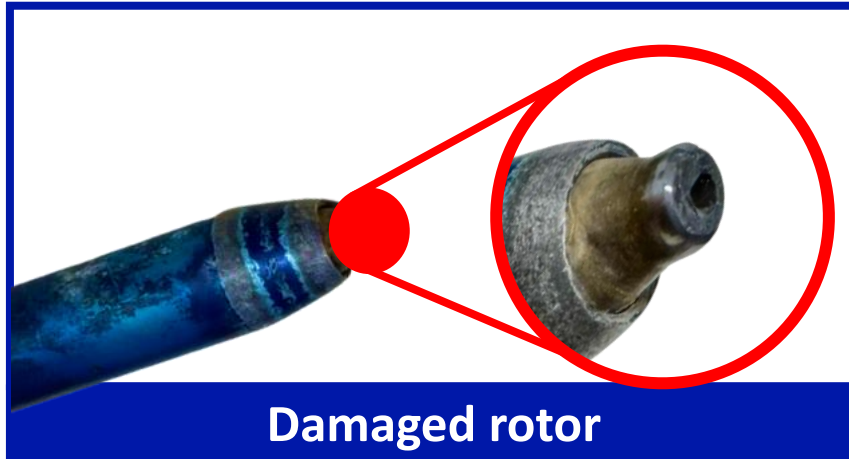
Damage to the rotor due to incorrect installation in the nozzle housing



# Monrojet® (MJ) - Typical Damage Patterns



Damage to the rotor tip due to incorrect nozzle positioning at start-up



Damaged rotor



New rotor

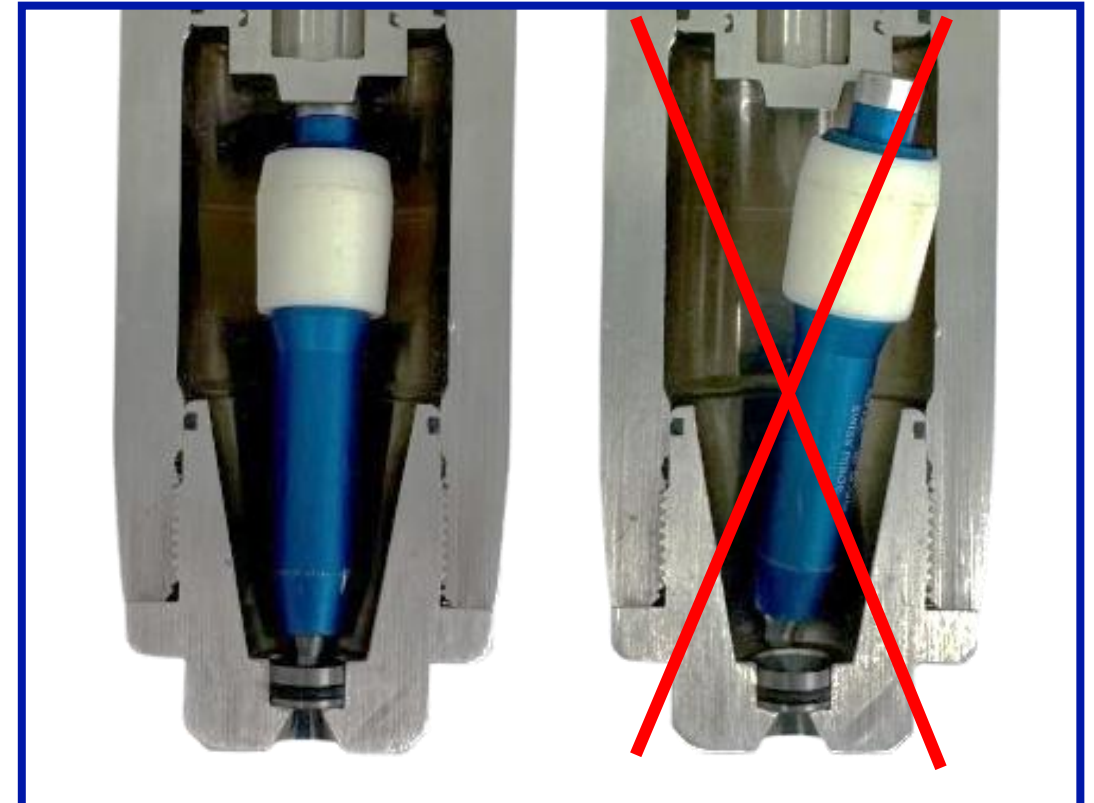


Always point the nozzle downwards during the start-up process.

# Monrojet® (MJ) - Typical Damage Patterns



## Damage to the rotor due to incorrect installation



**Always insert the tip of the rotor into the cone**



Only tighten the rear housing part hand-tight without using tools!