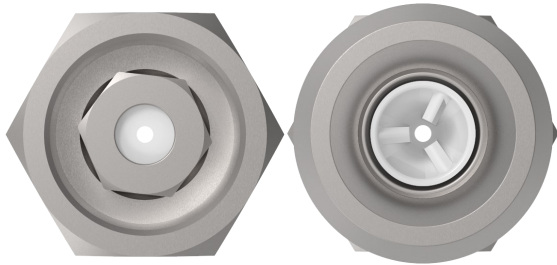
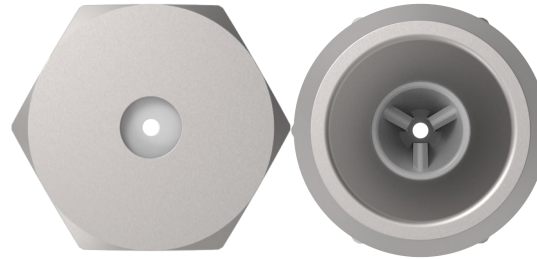


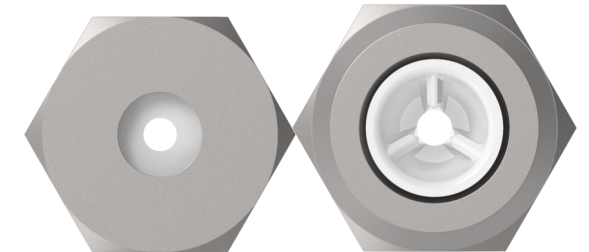
Round jet inserts



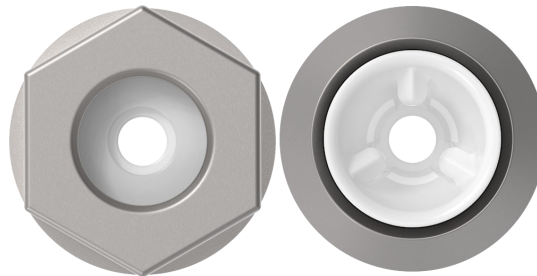
22.025 | Ø 0,01 - 0,04 inch



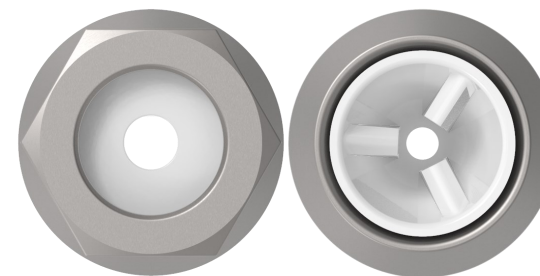
22.025 | Ø 0,04 - 0,12 inch



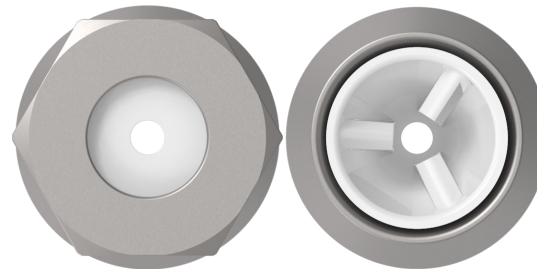
22.025 | Ø 0,13 - 0,16 inch



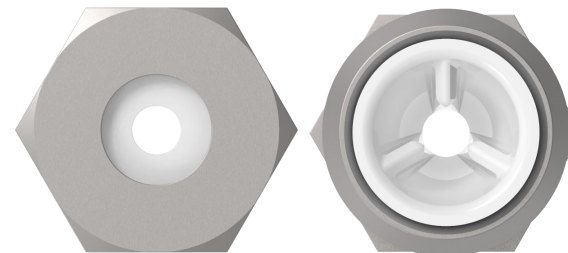
22.04 | Ø 0,01 - 0,06 inch



22.06 | Ø 0,01 - 0,12 inch



22.08 | Ø 0,01 - 0,13 inch



22.10 | Ø 0,04 - 0,16 inch