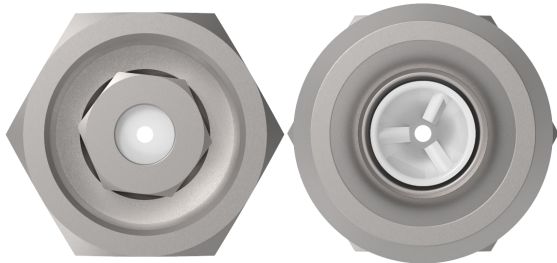
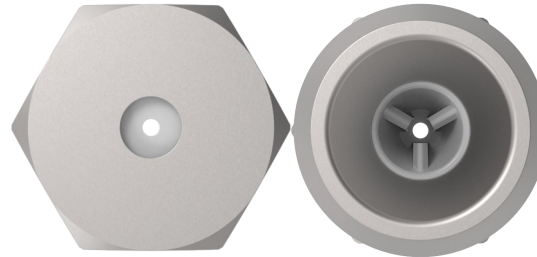


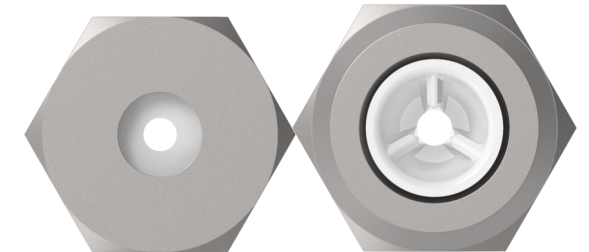
Rundstrahl Einsätze



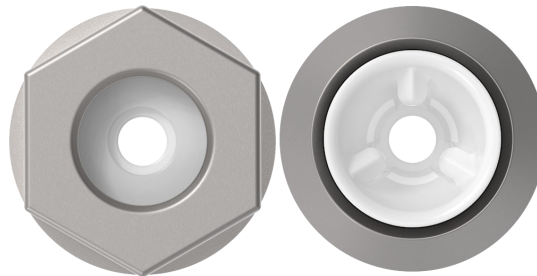
22.025 | \varnothing 0,3 - 0,9 mm



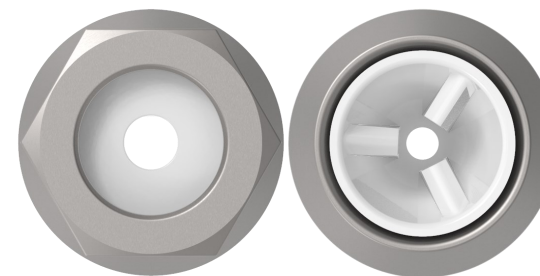
22.025 | \varnothing 1,0 - 3,2 mm



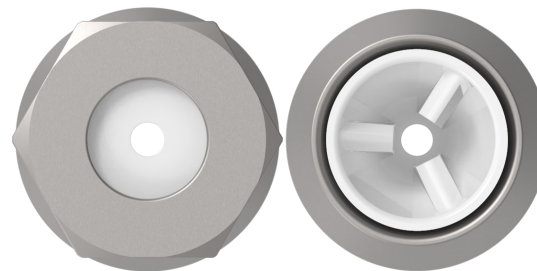
22.025 | \varnothing 3,4 - 4,0 mm



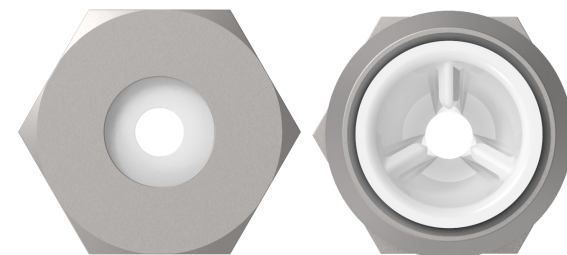
22.04 | \varnothing 0,3 - 1,5 mm



22.06 | \varnothing 0,3 - 3,0 mm



22.08 | \varnothing 0,3 - 3,4 mm



22.10 | \varnothing 1,0 - 4,0 mm