

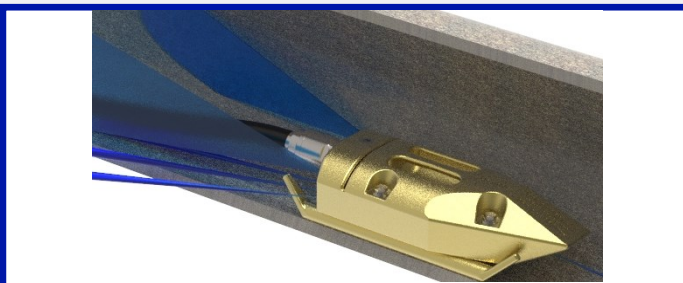
eScraper 50.xxx



Channel floor cleaning with a camera!



- ✓ **Maximum cleaning performance**
- ✓ **Integrated data management**
- ✓ **Removal of loose deposits**
- ✓ **Protect your expensive nozzles**



- Pipe diameter
300 mm – 2500 mm
- Clean large profiles
- Clean loose deposits on
channel floor



Dimensions	507 x 273 x 266
Min. flow rate	100 l/min
Max. pressure	250 bar
Connecting thread	3/4" 1" 5/4"




- User-friendly enz app
- Integrated data management
- Works with iOS and Android
- Data management on enz Cloud



- Double-pane sapphire glass
- 12 ultra-bright LEDs
- IP68 waterproof rating
- Wireless quick-charge function

enz[®] Camera



- ✓ Durable sapphire glass!
- ✓ Compatible with other enz nozzles
- ✓  **SWISS MADE**



Technical specifications:

Battery life	> 8h
Battery charge time	80% in 3 h
Battery type	Li-ion
Resolution	HD ready (720p)
Field of view	134°
Video format	MP4
Image rotation compensation	Digital
Lighting	12 ultra-bright LEDs
Flux	5400 lumens
Camera memory	24 GB (> 22h)
Charging station	Qi (wireless)
Interfaces	Wi-Fi (IEEE 802.11 b/g/n)
Camera and lighting glass	Double-pane sapphire glass

Hardware compatibility	Apple: iOS 15 / iPadOS 16 or newer Android: Android 10 or newer with Google Chrome 84 or newer Windows: Windows 10 with Google Chrome 84 or newer
-------------------------------	---